



## SOTI® ENTERPRISE MOBILITY MANAGEMENT

One single platform connecting all end devices

„Our computing and AIDC hardware is easily registered, set up and kept up to date.“

SOTI® MobiControl is the central management platform for the secure and economical operation of mobile and stationary end devices in enterprise environments. Supported operating systems are Android, Windows, iOS, Linux, MacOS and Link-OS printers. The cloud solution consists of the following components:

- **Mobile Device Management (MDM)**  
Secure management of mobile devices based on corporate policies
- **Mobile Application Management (MAM)**  
Company specific administration of all allowed Apps
- **Mobile Content Management (MCM)**  
Access management of mobile devices and apps to corporate resources such as cloud services, mail servers, file servers and sharepoint

The individualization and implementation of the application is done with minimal effort, saving time and money. You immediately benefit from industry-leading support for rugged industrial devices, regardless of manufacturer and operating system. The scalable software offers you numerous tried and tested features such as e-mail, app and content management, remote support, location-based services as well as comprehensive monitoring and analytics. As a project-experienced solution provider and long-standing SOTI partner, ICS guarantees your precisely tailored EMM solution, if desired including process consulting, device configuration, hardware services and software, or even as an outsourcing service. Furthermore, we are your software expert with our own development to migrate from older Windows systems to Android.

# TOP-CLASS MOBILITY MANAGEMENT



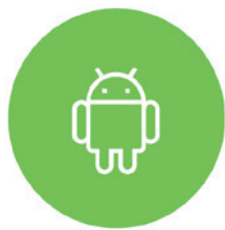
Best in rugged and IoT management with support for both modern and legacy OS



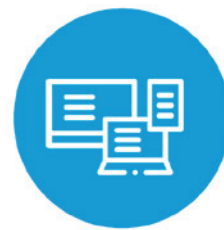
Industry recognized leader in management of business critical device deployments



High scalability customer deployments in the 100's of thousands of devices




Industry recognized leader in Android device management



Broadest device support support for devices from over 200 device manufacturers

## INTEGRATION OF VARIOUS END DEVICES

PCs	Notebooks	Vehicle terminals	Data glasses (AR)	and several other IT hardware.
Tablets	Scanner systems	Kiosk systems	VR devices	
Smartphones	Printing systems	Digital Signage	BYOD	
Handhelds (MDE, PDA)	Voice computer	POS assistants		



## COMPLETE SERVICE EXCELLENCE „OUT OF THE BOX“

**Capturing and creating new in-house and third-party devices** in the EMM system in seconds. Individual assignment of device classes / groups etc. Central management, even for several locations.

**Linking of inventoried devices** with established usage guidelines and subsequent **automatic installation of software components**, certificates and licenses. Automatic backups, updates and recovery functions.

**Blocking of critical data** in case of policy violations (e.g. expired passwords, jailbreaks, installation of unauthorized applications). **Lock down devices** in the event of loss, theft, or deleting of software.

**Proactively monitor device statuses, software licenses and battery charges.** Automatic notifications in the event of impending faults (e.g. license expiration, low battery power, etc.)

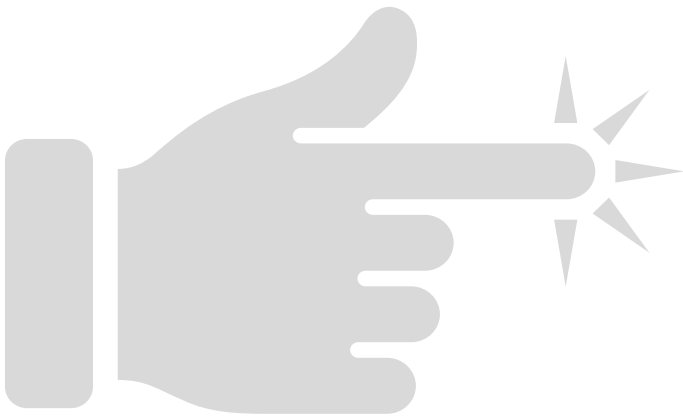
**Secure access exclusively for authorized administrators** is possible at **any time and any place** via online connection. Location or time-dependent restrictions can be easily defined and updated.

**Device activities and device history** can be tracked on the interactive, graphical interface. **Automated graphical statistics** and evaluations ensure complete transparency.

# MANAGED SERVICES FOR YOUR ENTERPRISE MOBILITY

The ICS Group is your leading specialist for supply chain managed services in the field of digitalization and automation. We ensure fast rollouts and reduce the complexity on your side. Our services include:

- Device configuration
- Inventory
- Autom. software distribution
- Security policies
- Monitoring
- 24/7 Service Desk (multilingual)
- Remote management
- Pool management
- IT lifecycle management
- IT service management
- Device replacement
- Repair (in-house center)
- Europe-wide field service
- Financing models
- IT operations management



## Your key benefits:

- Manage all endpoints centrally and securely
- Create and roll out apps to save time
- Optimization of critical workflows
- Ensure high availability of IT
- Highest flexibility for changes
- Efficiency through automation
- Increase of the internal / external service quality
- Significantly optimized total cost of ownership (TCO)
- Relief of your IT resource

## THE SOTI ONE PLATFORM

Globally networked companies - processes in the IoT age.

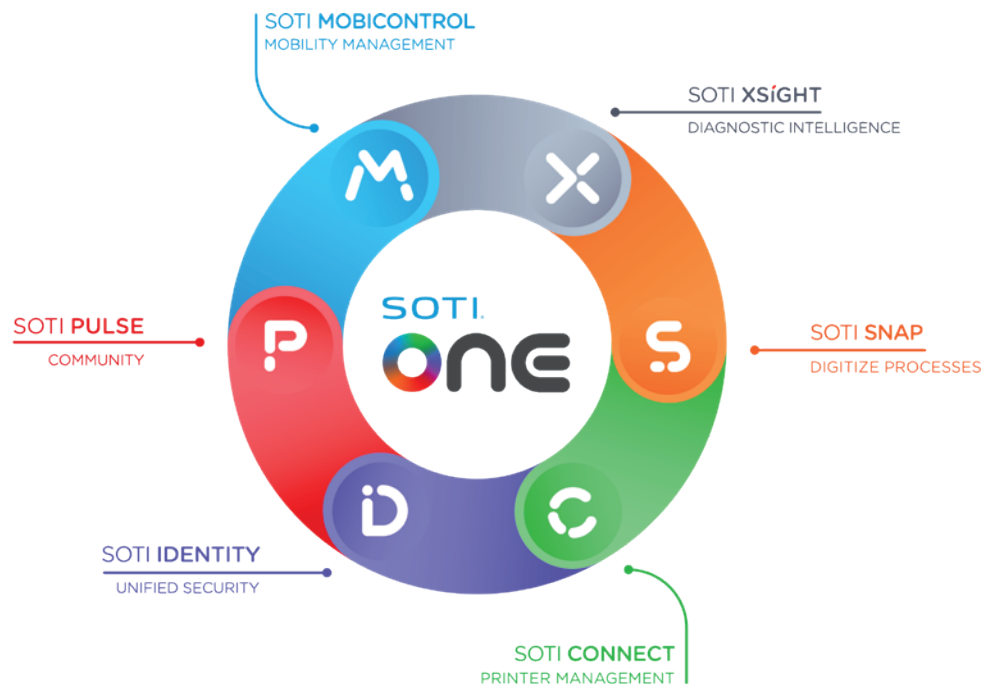
Your platform grows with your requirements.

ALSO CHANGE OVER TO EMM FROM THE CLOUD AND WITHOUT COMPROMISE.

TIME-SAVING.

COST EFFECTIVE.

PROCESS-SECURE.





**WE ARE THE  
SUPPLY CHAIN  
ARCHITECTS.**



#### About ICS Group

The ICS Group is a leading solution provider for the digitization and automation of business processes in the supply chain - end-to-end. We support our customers holistically with analysis, consulting, conception, software, hardware, integration and services from a single source.

With more than 30 years of project expertise, which extends internationally across all industries and company sizes, ICS is able to quickly and reliably realize individual process optimization. Our specialists bundle components from the product to the operator model and provide solutions for every business model.

**The ICS Group is looking forward to speaking with you!**

**Phone: +49 30 473 920 200**

**E-Mail: [future@ics-group.eu](mailto:future@ics-group.eu)**

**[www.ics-group.eu/en](http://www.ics-group.eu/en)**



NB20230323



SOTI© is a brand of SOTI Inc.  
All Rights Reserved.

ICS International GmbH Identcode-Systeme • Donaustr. 1 • 65451 Kelsterbach • Germany  
Phone: +49 6142 49794-00 • [info@ics-group.eu](mailto:info@ics-group.eu) • [www.ics-group.eu](http://www.ics-group.eu)